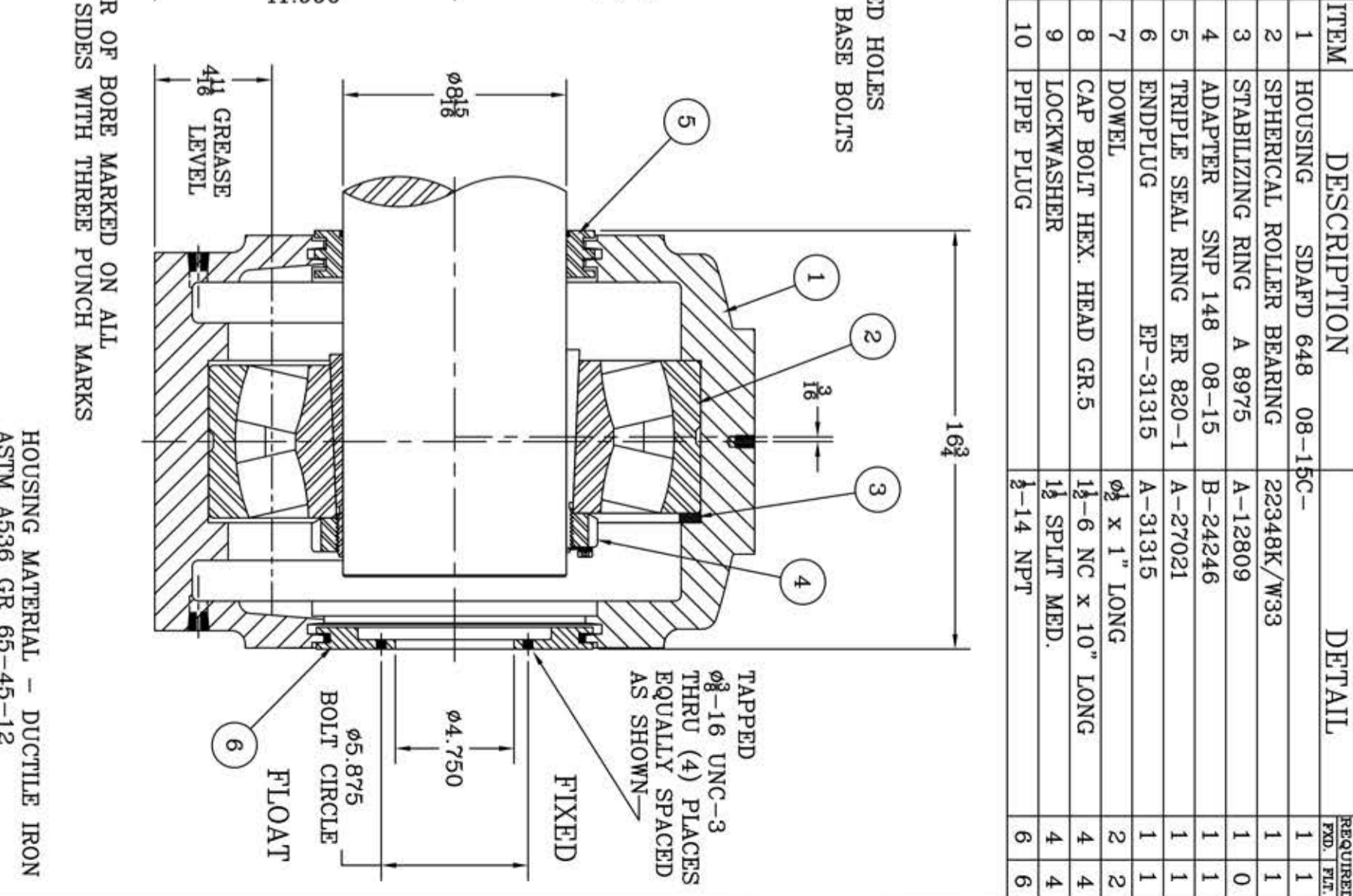
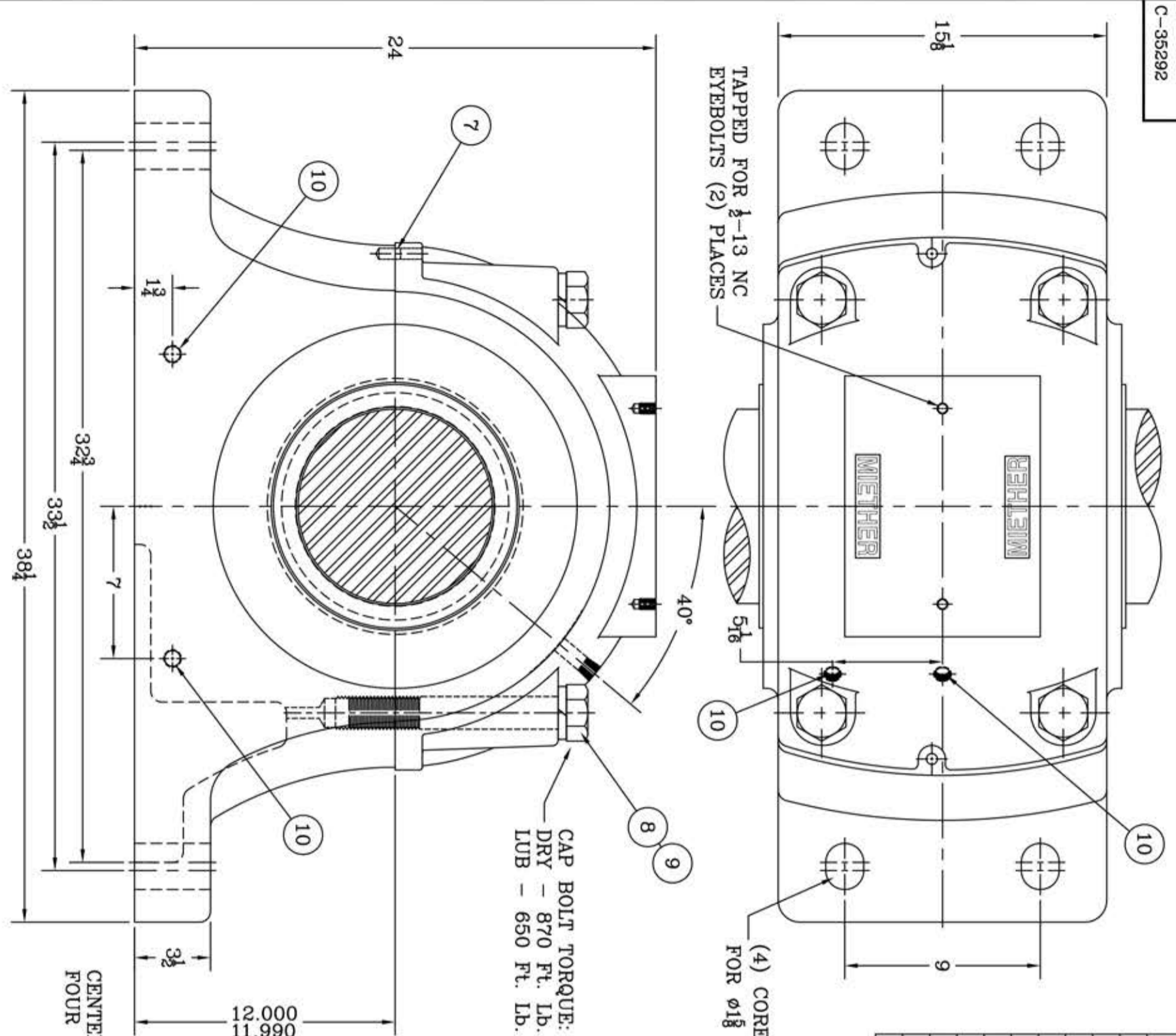


This drawing is the sole property of Miether Bearing Products and contains confidential and proprietary information. It is being provided to you for your use and may not be disclosed to any third party or used for any other purpose without Miether's prior written consent. The [materials] must be returned to the Company upon its demand. Your acceptance of these materials constitutes your acceptance of the foregoing terms.

C-35292



ITEM	DESCRIPTION	DETAIL	REQUIRED
1	HOUSING SDAFD 648 08-15C-		1 1
2	SPHERICAL ROLLER BEARING 22348K/W33		1 1
3	STABILIZING RING A 8975	A-12809	1 0
4	ADAPTER SNP 148 08-15	B-24246	1 1
5	TRIPLE SEAL RING ER 820-1	A-27021	1 1
6	ENDPLUG EP-31315	A-31315	1 1
7	DOWEL	Ø 1/2 x 1" LONG	2 2
8	CAP BOLT HEX. HEAD GR.5	1 1/2-6 NC x 10" LONG	4 4
9	LOCKWASHER	1 1/2 SPLIT MED.	4 4
10	PIPE PLUG	1/2-14 NPT	6 6

CENTER OF BORE MARKED ON ALL FOUR SIDES WITH THREE PUNCH MARKS

HOUSING MATERIAL - DUCTILE IRON
ASTM A536 GR 65-45-12

REVISIONS

SYMBOL	DESCRIPTION	MICRO-INCH VALUE
C		16
D		32
E		63
F		125
G		250
J		500
K		1000

TOLERANCE: UNLESS OTHERWISE SPECIFIED
FRACTIONS $\pm 1/32"$ ANGLES $\pm 0^\circ 30'$
DECIMALS $\pm .005"$ WELD $\pm 1/16"$
CASTING $\pm 1/16"$
A.I.S.I. STANDARD FINISHES

MIETHER BEARING PRODUCTS, INC.
AN ALCO INDUSTRIES COMPANY
ODESSA, TX. USA

SCALE	1 = 4	ASSEMBLY NO.
DRAWN PCF		
DATE	1/9/12	DRAWING NO.
CHK.		C-35292

SDAFD 22648 08-15 CL
ASSEMBLY DRAWING